

**WARNING!**

FAILURE TO CAREFULLY OBSERVE THE  
FOLLOWING INSTRUCTIONS COULD RESULT IN  
SEVERE EQUIPMENT DAMAGE.

INSTRUCTIONS FOR INSTALLING  
VENDAPIN L.L.C. VENDING PRODUCTS  
TO THE  
**Sharp Series COPIER'S**

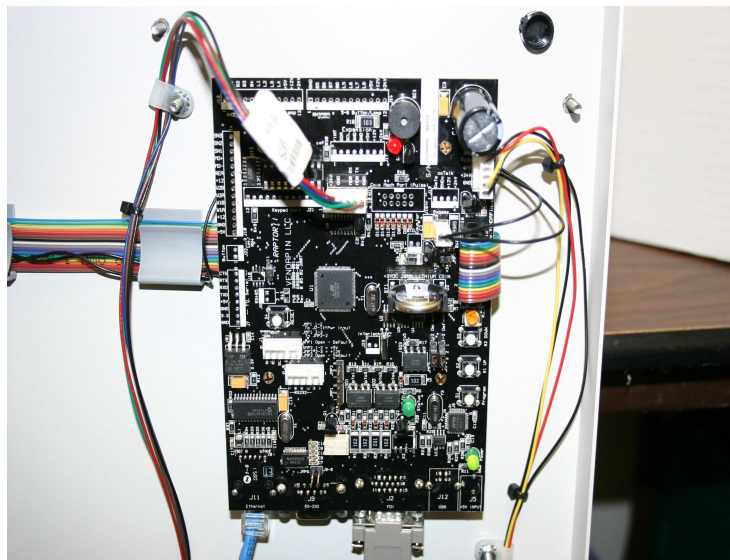
**With the DVEND harness kit installed**

**NOTE: Customer must purchase the appropriate DVEND Kit From Sharp**

**NOTE: For Sharp Color Copiers only, the Raptor II VMC controller board MUST have the K2 relay & a shunt jumper installed.**

**See Figure 5.**

1. Make sure the Sharp copier is functioning properly before connecting to the VENDAPIN, LLC vending unit.
2. Consult with your Sharp technical support representative on instructions for configuring your copier with an external vending device.
3. Turn off the Copier's main power and unplug from the AC receptacle.
4. Make sure the VENDAPIN, LLC vending unit is unplugged from the AC receptacle.
5. Locate the 609361R machine harness that came with the VENDAPIN, LLC vending unit.
6. Open the VENDAPIN, LLC vending unit to access the Raptor II VMC controller board inside. See *Figure 1*.



**WARNING!**

FAILURE TO CAREFULLY OBSERVE THE  
FOLLOWING INSTRUCTIONS COULD RESULT IN  
SEVERE EQUIPMENT DAMAGE.

7. Plug the VENDAPIN, LLC machine harness mini-Dsub 15 position connector to J2 on the Raptor II VMC controller. Ensure the mounting screws are tight. See *Figure 2*.



Figure 2

8. Route the VENDAPIN, LLC machine harness out of the bottom of the enclosure as shown in the following photos. Use the supplied strain relief to secure the harness in the exit hole. *Figure 3* is for an XL box and *figure 4* is for an SL box.

**WARNING!**

FAILURE TO CAREFULLY OBSERVE THE FOLLOWING INSTRUCTIONS COULD RESULT IN SEVERE EQUIPMENT DAMAGE.



Figure 3



Figure 4

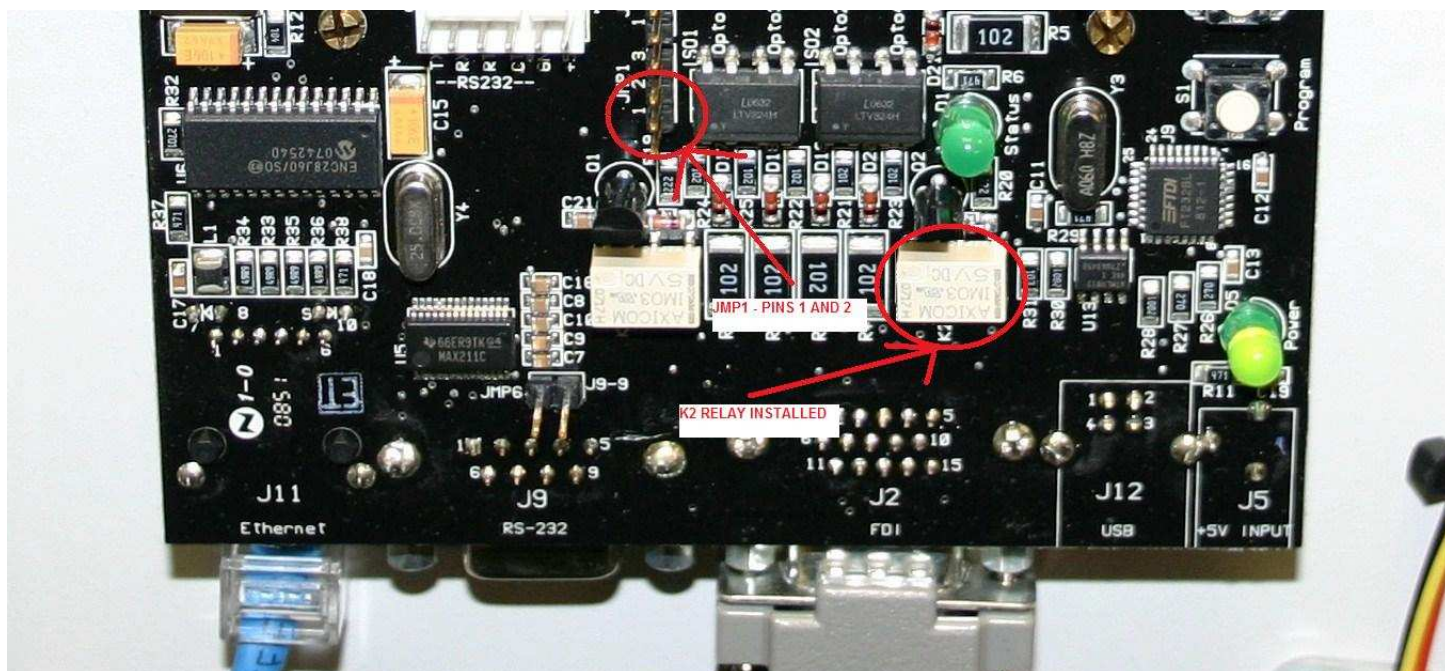
9. Connect the 15-pin DBA connector marked "Sharp" to the Sharp DVEND Connector.

**WARNING!**

FAILURE TO CAREFULLY OBSERVE THE FOLLOWING INSTRUCTIONS COULD RESULT IN SEVERE EQUIPMENT DAMAGE.

**NOTE: The DVEND or Vendor Interface connector location will vary depending on the Model.**

10. Install a jumper on *JMP 1*, pins 1 and 2 on the Raptor II board. See figure 5.



**Figure 5**  
JMP1 pins 1 and 2 circled on illustration, jumper block not shown.  
K2 relay for Sharp color copiers only

11. On the copier, enter the Simulation code or SIMM codes that will enable the copier for External Control or Copier Key Card. This code may vary from model to model. Refer to the Sharp Owners and Maintenance Manual for setup instructions.
12. Mount the VENDAPIN L.L.C. Access Control Product at a convenient location on the copier or copy stand; refer to the installation instructions in the Operator/Installation Instructions Manual. If the VENDAPIN L.L.C. Access Control Product is to be mounted on a Pedestal stand, refer to the instructions supplied with the Pedestal stand.



737361R-001  
Sept 2009

**WARNING!**

FAILURE TO CAREFULLY OBSERVE THE  
FOLLOWING INSTRUCTIONS COULD RESULT IN  
SEVERE EQUIPMENT DAMAGE.

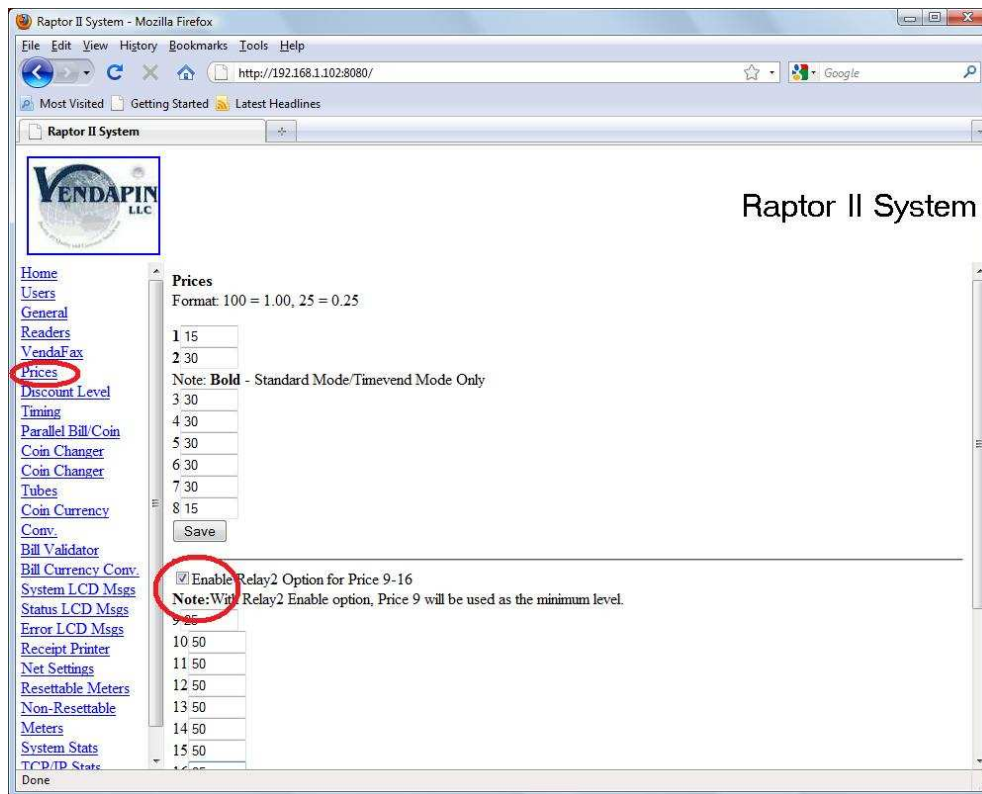
13. Secure the VENDAPIN L.L.C. interface cable and VENDAPIN L.L.C. machine harness wires with cable ties to the existing COPIER wire harness. Make sure the VENDAPIN L.L.C. cabling is clear of all moving parts.
14. The installation is now complete. It is recommended that the system be tested prior to replacing any of the copier covers. Refer to the Operator/Installation Instruction Manual for proper set up and test procedures. When the system test is completed and verified, replace all the copier covers.
15. See *table 1* for correct price settings.

**TABLE 1: Sharp  
Multi Price Machine Harness (609361R-001) For 5596 Series**

Price	BK/W or Color	Size
1	BK/W	(LT) 11"x 8 1/2"
2	BK/W	(LG) 8 1/2"x 14"
3	BK/W	(DLT) 11"x 17"
4	BK/W	OTHER
5	N/A	N/A
6	N/A	N/A
7	N/A	N/A
8	BK/W	(LT) 8 1/2" X 11"
9	Color	(LT) 11"x 8 1/2"
10	Color	(LG) 8 1/2"x 14"
11	Color	(DLT) 11"x 17"
12	Color	OTHER
13	N/A	N/A
14	N/A	N/A
15	N/A	N/A
16	Color	(LT) 8 1/2" X 11"

**Note: Prices 1 and 9 are for US Letter Short Edge Feed  
Prices 8 and 16 are for US Letter Long Edge Feed**

16. Place a check mark in the *Enable Relay2 Option for Price 9-16* box, Using either the Raptor II Web Access or Setup Express. See figures 6 and 7.



**Figure 6  
Raptor2 Web Access**

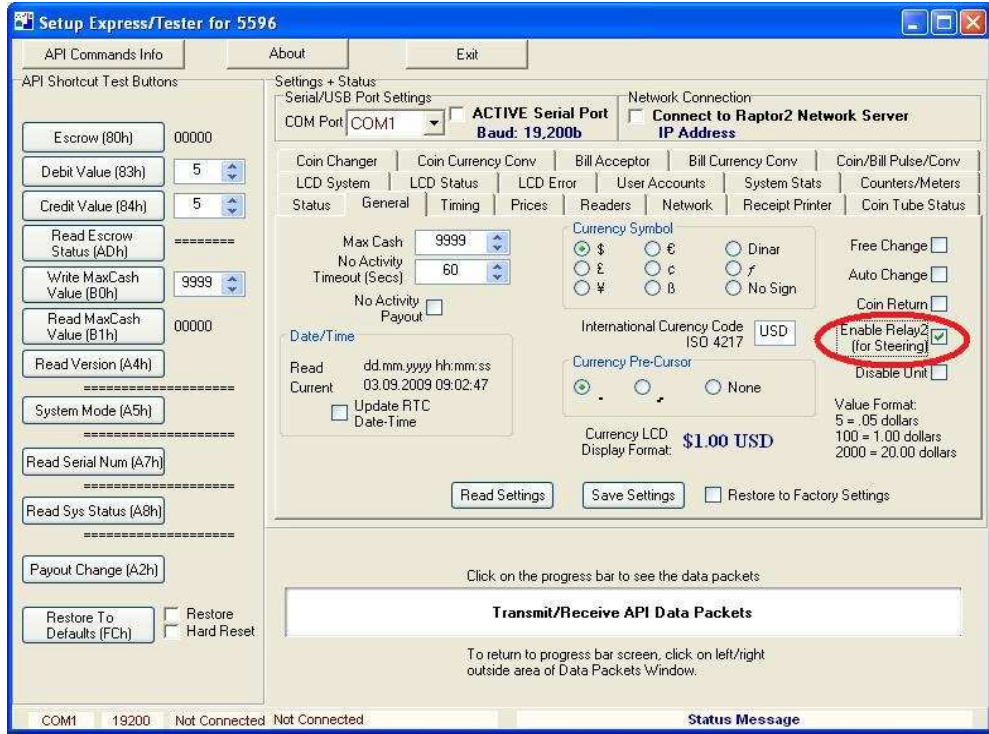


Figure 7  
Setup Express

## TIMING HELP

Please refer to your VENDAPIN user manual for the proper procedure to change the timing settings described below.

### DEFINITIONS

**Sense Time** – The length of pulse the VENDAPIN unit will recognize. Sense time **MUST** be set shorter than the pulse length. Example: The pulse length is 120ms, the sense time is set to 130ms. The VENDAPIN unit will not recognize the pulse because the sense time is longer than the pulse.

**Blind time** – The length of time the VENDAPIN unit will ignore any input pulses **AFTER** it is finished sensing the debit pulse.

**Reset delay time** – The amount of time from the end of the blind time to reset, or disable, the copier.

Problem	Cause	Solution
Multiple debits occur on a single vend	<ul style="list-style-type: none"><li>• Sense time too short</li><li>• Blind time too short</li></ul>	<ul style="list-style-type: none"><li>• Increase sense time value</li><li>• Increase blind time value</li></ul>
Free copies being dispensed	<ul style="list-style-type: none"><li>• Sense time too long</li><li>• Bypass keyswitch on</li></ul>	<ul style="list-style-type: none"><li>• Reduce sense time value</li><li>• Turn off bypass mode</li></ul>
No debits occur	<ul style="list-style-type: none"><li>• Reset delay too long</li><li>• Sense time too long</li></ul>	<ul style="list-style-type: none"><li>• Decrease reset time</li><li>• Decrease sense time</li></ul>
No debit on last vend	<ul style="list-style-type: none"><li>• Blind time too long</li></ul>	<ul style="list-style-type: none"><li>• Decrease blind time</li></ul>
Paper jams (first copy)	<ul style="list-style-type: none"><li>• Reset delay time too short</li></ul>	<ul style="list-style-type: none"><li>• Increase reset delay time</li></ul>
Paper jams (one copy selected, tries to make another copy)	<ul style="list-style-type: none"><li>• Reset delay time too long</li><li>• Leading edge not selected</li></ul>	<ul style="list-style-type: none"><li>• Decrease reset delay time.</li><li>• Select leading edge debit</li></ul>
Card is ejected while vending device is still running, resulting in free copies.	<ul style="list-style-type: none"><li>• Eject delay time too short</li></ul>	<ul style="list-style-type: none"><li>• Increase eject delay time</li></ul>
Card takes too long to eject after job is done	<ul style="list-style-type: none"><li>• Eject delay time too long</li></ul>	<ul style="list-style-type: none"><li>• Decrease eject delay time</li></ul>
Skipped debits (debits every other copy)	<ul style="list-style-type: none"><li>• Sense time too long</li><li>• Blind time too long</li></ul>	<ul style="list-style-type: none"><li>• Decrease sense time</li><li>• Decrease blind time</li></ul>